

T13N

R1W



Office of the Monroe County Surveyor
Trohn Enright-Randolph

Health Services Building
119 West 7th Street
Bloomington, IN 47404
Phone: (812) 349-2570

Dear User,

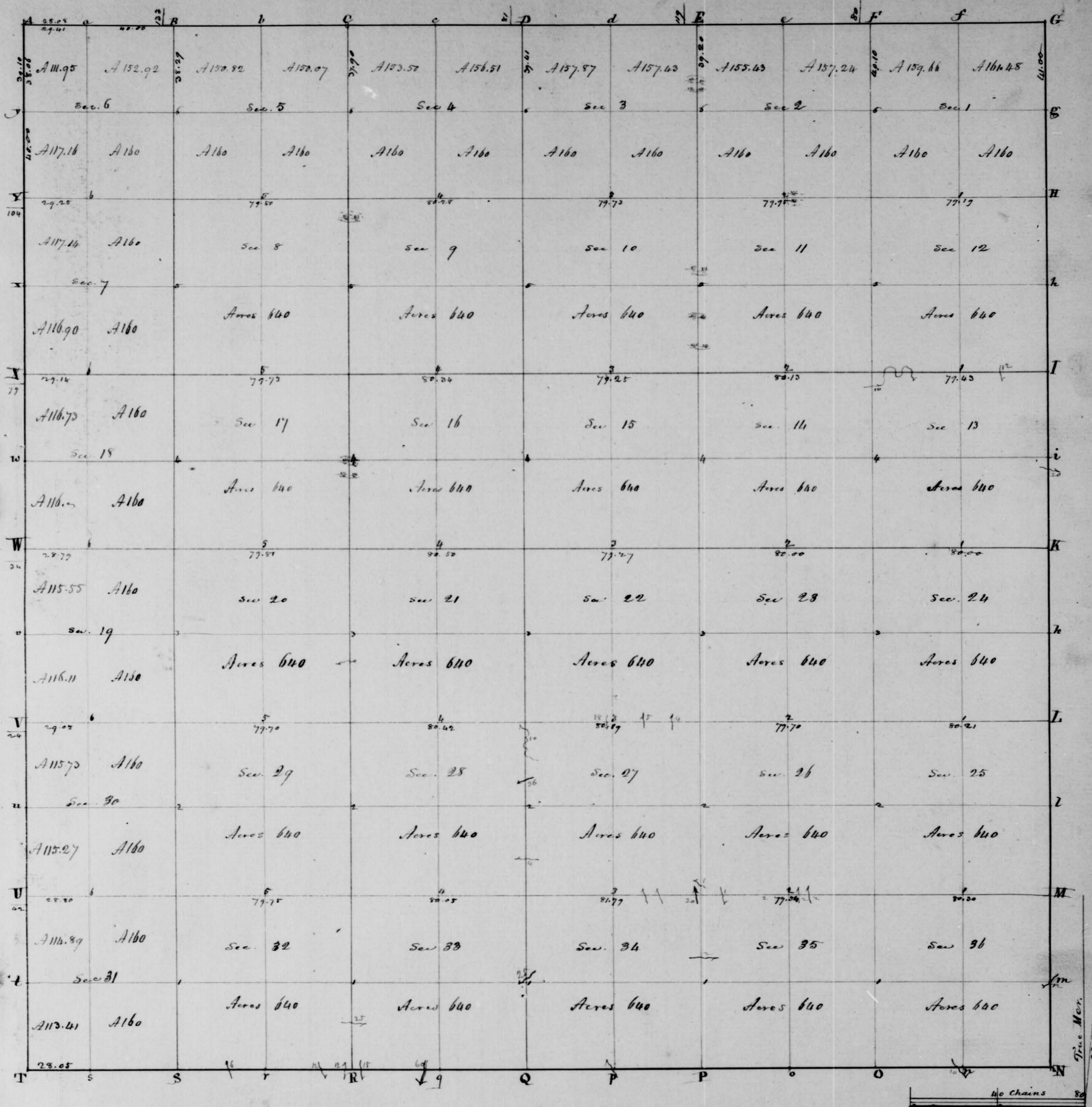
The following images were obtained in 2017 by the Office of the Monroe County Surveyor from the State Imaging and Microfilm Laboratory at the Indiana State Archives. The field notes and plats for Morgan County are stored on microfilm Reel 7534 at the Indiana State Archives. Each page provided by the State Imaging and Microfilm Laboratory is approximately 18MB. Our office combined the pages by Township & Range and reduced the resulting pdfs. This process may have caused some degradation in quality. We will provide unreduced images of specific pages if required. Please contact us at 812-349-2570 or at SurveyorsOffice@co.monroe.in.us to request a higher quality image of any specific page.

The pdfs are bookmarked with the original page numbers as assigned by the State Imaging and Microfilm Laboratory.

Be prepared to provide the county name, reel number, and the required page numbers when requesting full sized images.

If you would like a DVD of an entire county, please provide us with one DVD per county along with a self-addressed, stamped envelope.

Trohn Enright-Randolph
Monroe County Surveyor



Township N. XIII North, Range N. I West 2nd Mer.

Surveyed by John Wilroy...1819.

Description of the Soil on the interior Sectional lines.

Between sections	Quality &c	Between sections	Quality &c	Between sections	Quality &c
35.31	First & mile bottom. Buckeye, Cherry, Sugar, Walnut, last & top	35.34	First & mile very silty floor. last & 2 nd rate	31.32	2 nd rate. Broken. Buck. Oak, Hickory, Poplar
25.36	First & mile floor last & top. Buck. Oak, Sugar, Walnut	27.34	First & mile silty. last & mile bottom	29.32	Same
25.36	Same	27.34	Same	29.32	Same
24.25	First & mile bottom. Timber same	22.24	First & mile 2 nd rate. last & high hills. thin soil	20.29	Broken. High hills
23.24	High hills. Timber. Buck. Oak &c	21.22	First & mile floor. silty. last & 2 nd rate	19.20	First & mile 2 nd rate. last & broken
13.24	Thin soil. Buck. Oak. Ash. Walnut. Spruce &c	15.22	2 nd rate. Broken same	17.20	2 nd rate. Broken. Timber same
13.14	2 nd rate. level. Buck. Sugar. Poplar. Oak &c	15.16	2 nd rate. Hickory. Poplar. Sugar. Buck. &c	17.18	Same
12.19	First & mile. last & high hills. which are top same	11.15	Same	5.17	Same level
11.12	First & thin soil. last & high hills. top same	9.11	First & mile Broken. last & 2 nd rate	7.8	Same
1.12	Rich land. Buck. Cherry. Buckeye. Sugar. Hickory & Oak	7.10	2 nd rate	5.6	Same
1.2	Same	3.14	Same	4.9	Same
34.35	First & mile. Buck. last & top	32.33	Hills & deep hollows. round sand stones	7.18	Level. Buck. Poplar. Sugar. Walnut. Buckeye &c
24.25	Silty with same bottom	28.33	Silty & poor	18.19	First & mile Broken. thin soil
24.25	Same	28.29	Same	19.30	Same & silty
23.24	First & mile silty. last & high hills. & brushy	21.24	Same	30.31	Poor & Broken. Oak. Buck & Oak. Spruce
22.25	Silty. top same. Timber same	20.21	very broken		
14.2	Silty & deep hollows	16.21	First & same. last & 2 nd rate level		
13.12	First & same. last & high hills	16.14	First & mile 2 nd rate. last & poor & Broken		
11.12	Rich bottom. Sugar. Walnut. Buck. Poplar & Spruce	9.16	2 nd rate. Hickory. Buck. Poplar. Oak &c		
10.11	Rich - timber same	8.9	Same		
9.11	Same	4.9	Same		
2.7	Same	4.5	Same level		

T. N. 13. N. R. N. 17. 2nd Mer. Ind.

40.00 Set a 7/8 supost from which,
Beck 14 in dia. beam S 52 W 11 lbs. ash, va
Do. 18 " " S 87 E 37 " "
80.00 Set a post for the cu of sw. 12 1/2 13 from which, sw
Elm 18 in dia. beam S 68 E 26 lbs. ash, va,
B. Oak 9 " " S 63 W 6 " "
Sound wood Timber, Buck, Sugar, Elm, Birch, Red
cane & good for farming

North On the East Boundary of sw. 12. T. 13. N. R. 17.
40.00 Set a 7/8 supost from which,
Beck 12 in dia. beam S 40 E 39 lbs. ash, va,
Do. 8 " " S 54 W 2 " "
80.00 Set a post for the cu of sw. 12 1/2 from which,
Beck 12 in dia. beam S 7 E 9 lbs. ash, va,
Do. 18 " " S 60 W 29 " "
Sound & timber same.

North On the East Boundary of sw. 1. T. 13. N. R. 17.
40.00 Set a 7/8 supost from which,
Oak 24 in dia. beam S 46 W 6 lbs. ash, va,
Sugar 7 " " S 3 E 33 " "
80.00 Set a post for the cu of sw. 1. 6. 31 1/2 T. 13 & 14. N.
R. 1 E & 17. from which a
Sugar 18 in dia. beam S 42 E 31 lbs. ash, va,
Oak 18 " " S 35 W 30 " "
Sound the same.

North Boundary
West On the South Boundary of sw. 36. T. 14. N. R. 17.
40.00 Set a 7/8 supost from which,
Beck 18 in dia. beam S 34 W 6 lbs. ash, va,
Do. 27 " " S 6 W 37 " "

T. N. 13. N. R. N. 17. 2nd Mer. Ind.

44.12 To a Creek 12 miles, across N.
80.00 Set a post for the cu of sw. 35 & 36 from which,
Beck 10 in dia. beam S 5 W 16 lbs. ash, va,
B. Walnut 24 " " S 60 E 13 " "
Sound wood & good for farming Timber, Buck, Sugar,
Oak, Oak, Some part rather wet;

West On the South Boundary of sw. 35 T. 14. N. R. 17.
40.00 Set a 7/8 supost from which,
Beck 14 in dia. beam S 9 E 21 lbs. ash, va,
Do. 14 " " S 65 W 30 " "
80.00 Set a post for the cu of sw. 34 & 35 from which,
Beck 24 in dia. beam S 68 E 6 lbs. ash, va,
Do. 15 " " S 39 W 46 " "
Sound similar Part rather wet.

West On the South Boundary of sw. 34. T. 14. N. R. 17.
40.00 A Oak 60 in dia. beam for the cu of p. sw.
48.00 To a Brook 10 miles, across S.
80.00 Set a post for the cu of sw. 33 & 34 from which,
Beck 20 in dia. beam S 66 W 28 lbs. ash, va,
Do. 10 " " S 41 E 17 " "
Sound wood Timber same. Good land for farming

West On the South Boundary of sw. 33. T. 14. N. R. 17.
40.00 Set a 7/8 supost from which,
Sugar 14 in dia. beam S 28 E 13 lbs. ash, va,
Beck 9 " " S 58 W 18 " "
80.00 Set a post for the cu of sw. 33 & 33 from which,
Beck 30 in dia. beam S 64 E 15 lbs. ash, va,
Do. 27 " " S 65 W 28 " "
Sound the same as last mile.

T. N. 13. N. R. N. 17. 2nd. M. Ind.

West On the South Boundary of sec. 32 T. 14. N. R. 17.
 40.00 Set a 7/8 sup post from which,
 Buck 10 in dia. beam N 67° W. 12 lbs. ash; 7a,
 No. 12 " " " S 67° E. 19 " "
 80.00 Set a post for the cor. of sec. 31 & 32 from which,
 Buck 18 in dia. beam N 11° W. 27 lbs. ash; 7a,
 No. 18 " " " S 11° W. 3 " "
 Same the same as last mile.

West On the South Boundary of sec. 31 T. 14. N. R. 17.
 32.00 It is a Brook 8 lbs. mid. Course N.
 40.00 Set a 7/8 sup post from which,
 Buck 9 in dia. beam North 11 lbs. ash; 7a,
 No. 9 " " " South 7 " "
 68.18 Intersect the N. 13 line 90 links South of the post cor. of
 Sec. 16. 31 & 32. Imp. 1. N. 13 & 14. N. R. 17.

West Boundary r. 6. 1st. 1819.
 North On the East Boundary of sec. 36 T. 13. N. R. 27.
 40.00 It is a Brook 15 links mid. Course N. W.
 40.00 Set a 7/8 sup post from which,
 Buck 18 in dia. beam N 11° E. 45 lbs. ash; 7a,
 No. 11 " " " S 45° W. 12 " "
 80.00 Set a post for the cor. of sec. 35 & 36 from which,
 Maple 14 in dia. beam N 65° E. 5 lbs. ash; 7a,
 No. 18 " " " N 84° W. 12 " "
 Sand bar and wet; part brushy, swampy

North On the East Boundary of sec. 35 T. 13. N. R. 27.
 40.00 Set a 7/8 sup post from which,
 13 ash 8 in dia. beam S 65° E. 25 lbs. ash; 7a,
 Buck 8 " " " N 67° W. 1 " "

T. N. 13. N. R. N. 17. 2nd. M. Ind. 427

80.00 Set a post for the cor. of sec. 24 & 25 from which,
 Buck 9 in dia. beam S 31° E. 11 lbs. ash; 7a,
 No. 10 " " " N 50° W. 37 " "
 Land here Timber Buck, Oak, Hickory, Elm,
 part out and swampy and part good for farming

North On the East Boundary of sec. 24 T. 13. N. R. 27.
 40.00 Set a 7/8 sup post from which,
 Elm 9 in dia. beam N 52° W. 6 lbs. ash; 7a,
 No. 12 " " " S 31° E. 41 " "
 80.00 Set a post for the cor. of sec. 13 & 24 from which,
 Buck 18 in dia. beam S 29° E. 34 lbs. ash; 7a,
 No. 12 " " " N 21° W. 15 " "
 Same the same.

North On the East Boundary of sec. 13 T. 13. N. R. 27.
 40.00 Set a 7/8 sup post from which,
 Buck 40 in dia. beam N 18° E. 10 lbs. ash; 7a,
 Buck 12 " " " N 73° W. 30 " "
 80.00 Set a post for the cor. of sec. 12 & 13 from which,
 Buck 30 in dia. beam N 88° E. 7 lbs. ash; 7a,
 No. 18 " " " S 58° W. 29 " "
 Land here and good for farming; Timber Buck,
 Sugar, Spruce, Elm, &c.

North On the East Boundary of sec. 12 T. 13. N. R. 27.
 40.00 Set a 7/8 sup post from which,
 Buck 18 in dia. beam S 0° W. 39 lbs. ash; 7a,
 Elm 18 " " " N 24° E. 54 " "
 80.00 Set a post for the cor. of sec. 11 & 12 from which,
 Buck 18 in dia. beam S 25° E. 13 lbs. ash; 7a,
 Dogwood 3 " " " N 20° W. 6 " "
 Same the same as last mile.

T. A. 13. N. R. No 177 2nd Mer. Ind.

- North South East Boundary of sec. 1. T. 13. N. R. 2 W.
 40.00 Set a 1/2 suppost from which,
 Beut 20 in diam here S 15 E. 32 lbs ash, 24,
 Hick 3 " " S 17 W 16 " "
 70.00 To a Brook 6 lbs mts. Comer S. W.
 80.00 Set a temp post for the cor. of sec. 1, 6, 31 & 36. T. 13 N.
 14. N. R. 1 & 2 W.
 79.10 To the cor. of T. 13 & 14. N. R. 1 & 2 W.

Surveyed by
 William Harris.
 Depy Sur.

Subdivisions N. 63° 30' E.

- North Between Sec 35 & 36. T. 13. N. R. 1 W.
 1.77 To a Beut. 14 in diam in the mts.
 30.16 To a Hick 22 " " " "
 40.00 Set a 1/2 suppost from which,
 Logwood 6 in diam here. N 72 W. 17 lbs ash, 24,
 Beut. 6 " " S 1 E. 26 " "
 Sept. 20. 1819
 45.80 To a Red Oak. 10 in diam in the mts.
 66.61 " " Beut. 12 " " " "
 80.00 Set a post for the cor. of sec. 25, 26, 35 & 36. from which,
 Hick 24 in diam here S 12 W. 11 lbs ash, 24,
 Beut. 10 " " N 76 E. 25 " "
 Sand Broken Timber Beut, Sugar, & W. Oak,

- East On a Random line between Sec 25 & 36. T. 13. N. R. 1 W.
 40.00 Set a temp post for the post.
 80.30 Intersect the East R. by 2nd P. Mer. 10 miles north
 of the post cor. of sec. 25 & 36.
 Lands very poor & very broken Timber Oak, Hick,
 & Beut, Banks, Slate, Stone

T. A. 13. N. R. No 177 2nd Mer. Ind.

- West On the true line between Sec 25 & 36. T. 13. N. R. 1 W.
 40.15 Set the temp post for the suppost from which, (true line)
 Maple. 24 in diam here West 21 lbs ash, 24,
 Hick 9 " " N 26 E. 35. " "
 80.30 To the post cor. of sec. 25, 26, 35 & 36.

- North Between Sec 25 & 36. T. 13. N. R. 1 W.
 10.12 To a Poplar. 36 in diam in the mts.
 37.77 To a Beut. 24 in diam in " "
 40.00 Set a 1/2 suppost from which,
 Beut. 20 in diam here N 27 E. 29 lbs ash, 24,
 R. Oak, 36 " " S 1 E. 6 " "
 43.75 To a Beut. 6 in diam in the mts.
 78.50 To a Beut. 40 " " " "
 80.00 Set a post for the cor. of sec. 23, 24, 25, & 26. from which,
 a Beut. 14 in diam here N 72 E. 21 lbs ash, 24,
 Do. 13 " " S 13 W 26 " "
 Some hard and thin Timber Beut, Oak, & Hick,
 Some Poplar, and ash, N. 7. a few Spruce & other growths

- East On a Random line between Sec 24 & 25. T. 13. N. R. 1 W.
 40.00 Set a temp post for the post.
 80.21 Intersect the East R. by 2nd P. Mer. 5 miles north
 of the post cor. of sec. 24 & 25.
 Some Broken & poor Timber Beut, Oak, Ash,
 & Poplar,

- West On the true line between Sec 24 & 25. T. 13. N. R. 1 W.
 40.10 Set the temp post for the suppost at the ardent on the true line
 from which, Poplar, 12 in diam here S 15 E. 19 lbs ash,
 and a Hick 14 " " N 30 E. 23. " "
 80.21 To the post cor. of sec. 23, 24, 25 & 26.

J. N. 13 N. R. N. 177 2nd Mm. Sud.

North Return Sur 23 & 24 J. 13 N. R. 177.
 36.00 To a Bech. 20 in dia. in the m.
 40.00 Set a p. support from which,
 Bech. 24 in dia. beam. S 8 E. 27 lbs cast; 12,
 Black, 26 " " " S 82 W. 14 " "
 66.08 To a Quaking Asp. 15 in dia. in the m.
 80.00 Set a post for the ca of sur. 13 14. 23 & 24 from which,
 Sugar. 4 in dia. beam. S 20 E. 9 lbs cast; 12,
 Do. 4 " " " S 17 W. 23 " "
 Sound p. 1/2 mile back some Hollons; 2nd p. half
 Broken. Timber Bech, Oak, Quaking Asp., Sugar,
 Gum, & Poplar, last p. mile timberly Spruce &c.

East On a Run am line between Sur 13 & 24 J. 13 N. R. 177.
 40.00 Set a temp. p. support.
 80.00 Intersect the N. 13 line 27 miles North of the post ca of
 Sur. 13 & 24. Sound him on a Run, Timber Bech,
 Ash, Quaking Asp. Poplar & Sugar, & Oak,

West On the line between Sur 13 & 24 J. 13 N. R. 177.
 40.00 Set the temp. p. support at the ar arish on the m. m.
 from which, Stick 6 in dia. beam. N 67 W. 14 lbs cast;
 under 10. 4 " " " S 7 E. 7 " "
 80.00 To the ca of sur. 13 14. 23 & 24 Sept. 21. 1819

North Return Sur 13 & 24 J. 13 N. R. 177.
 1.81 To a Bech. 24 in dia. in the m.
 28.75 To " " 36 " " " "
 40.00 Set a p. support from which,
 Bech. 18 in dia. beam. N 12 W. 29 lbs cast; 12,
 Walnut. 20 " " " S 4 W. 30 " "
 41.74 To a Gray Ash. 36 in dia. in the m.
 73.06 To a Post Oak. 20 in dia. in the m.

J. N. 13 N. R. N. 177 2nd Mm. Sud.

73.30 To a Bech. 10 lbs m. m., corner E.
 80.00 Set a post for the ca of sur. 11. 12. 13 & 14 from which,
 Stick 13 in dia. beam. S 59 E. 27 lbs cast; 12,
 Bech. 14 " " " N 31 W. 7 " "
 Sound first half mile back some m. m. land. Timber
 Ash, Poplar, Sugar, Bech, & Oak,

East On a Run am line between Sur 12 & 13 J. 13 N. R. 177.
 6.25 To a Bech. 10 lbs m. m. crossing to the N. E.
 11.25 crossed the same. Bech. corner S of E.
 13.25 " " " " " " N. E.
 18.25 " " " " " " S. E.

40.00 Set a temp. p. support.
 45.25 To a Bottom.
 54.25 To a Bech. 12 lbs m. m., corner S.
 79.43 Intersect the E. 13 on 2nd P. Mm. 50 lbs North of the
 post ca of sur. 12 & 13. Sound p. 1/2 m. 2nd p.
 m. m.; Timber Bech, 13 & 14 ash, Sugar, Gum, &
 Walnut.

West On the line between Sur 12 & 13 J. 13 N. R. 177.
 39.71 Set the temp. p. support at the ar arish on the m. m. from
 which, Stick 20 in dia. beam. N 2 E. 33 lbs cast; 12,
 13 ash. 4 " " " S 5 E. 20 " "
 79.43 To the ca of sur. 11. 12. 13 & 14

✓ North Return Sur 11 & 12 J. 13 N. R. 177.
 7.50 To a N Oak. 42 in dia. in the m.
 36.50 To a Poplar. 118 " " " " "
 40.00 Set a p. support from which,
 Elm. 9 in dia. beam. N 23 W. 23 lbs cast; 12,
 S. Oak 30 " " " S 1 E. 3 " "
 51.00 To an Elm. 48 in dia. in the m.

T. N. 13. N. R. N. 17. D. 2. M. S. Ind.

73.91 To a Sugar. 20 in dia. in the tree.
84.00 Set a post for the cor. of sec. 1, 2, 11, & 12 from which,
Syrup 16 in dia. from. S12°30' W. 25 lbs ash, 12,
No. 18 " " " S17° E. 35 " "
Sundered & bent, Timber Beech, Sugar, Ash, &c.

East On a narrow line between Sec. 1 & 12. T. 13. N. R. 17.

40.00 Set the timber post for support

79.19 Enter cut the N. 13 line on D. 2. P. M. 85 miles South
of the first cor. of sec. 1 & 12.
Sundered and bent Timber Beech, Sugar, Ash,
Poplar, Walnut & Lyrus. Undergrowth Spice, &c.

West On a true line between Sec. 1 & 12. T. 13. N. R. 17.

39.59 Set the timber post for support at the cor. of sec. 1, 2, 11, & 12 from
which, Beech 19 in dia. from. N9° W. 20 lbs ash,
and a W. Beech 4 " " " S17° E. 21 " "

79.19 To the cor. of sec. 1, 2, 11 & 12.

North Between Sec. 1 & 12. T. 13. N. R. 17.

0.17 To a Red Elm. 14 in dia. in the tree.

3.00 To the cut land

37.50 To a White Oak. 36 in dia. in the tree.

40.00 Set a post for support from which,
W. Oak 6 in dia. from. S15°30' W. 27 lbs ash & 12,
Hick 10 " " " S17° E. 25 " "

44.25 To a Lyrus. 24 in dia. in the tree.

70.50 To a Ash. 20 " " " " "

80.10 Enter cut the North 13 line 80 miles East of the first cor. of
Sec. 1 & 12. T. 14. N. R. 17. and set a post for the
cor. of sec. 1 & 12 from which,
Beech 32 in dia. from. S17° W. 28 lbs ash, 12,
No. 11 " " " S12° E. 11 " "

T. N. 13. N. R. N. 17. D. 2. M. S. Ind.

Sundered and bent; Timber Beech, Sugar, Ash,
Walnut, Hick & Pecan 22° Sept.

North Between Sec. 34 & 35. T. 13. N. R. 17.

9.50 To a Beech. 18 in dia. in the tree.

38.00 To a Poplar. 36 in dia. in the tree.

40.00 Set a post for support from which,
Beech 30 in dia. from. S17° W. 24 lbs ash, 12,
Hick 8 " " " S17° E. 34 " "

48.24 To a Beech 18 in dia. in the tree.

52.10 " " Brook. 2 miles wide, corner E.

79.06 To a Hick 4 in dia. in the tree.

80.10 Set a post for the cor. of sec. 26, 27, 34 & 35 from which,
Dogwood, 3 in dia. from. S15° W. 15 lbs ash, 12,
No. 21 " " " S15° E. 13 " "

Sundered & bent, broken & Prov; D. 2. half D. 2. rate.
Timber Beech, Poplar, Hick & B. Oak, &c.

East On a narrow line between Sec. 26 & 35. T. 13. N. R. 17.

10.00 To a Brook 2 miles wide, corner N. W.

33.25 Set a timber post for support. " N. W.

40.00 To a Brook 1 mile wide, corner N.

49.00 " " Do. 2 " " " " "

79.54 Enter cut the N. 13 line 39 miles South of the first cor. of
Sec. 25, 26, 34 & 35. Sundered & bent D. 2. rate; Timber
Hick, Beech, Poplar, W. Oak,

West On a true line between Sec. 26 & 35. T. 13. N. R. 17.

39.77 Set the timber post for support at the cor. of sec. 1, 2, 11, & 12 from
which, Beech 24 in dia. from. S12° W. 17 lbs ash,
and a No. 18 " " " S17° E. 30 " "

79.54 To the cor. of sec. 26, 27, 34 & 35.

North Return Jul 26th I 13 N R 177.
 4.50 To a Beech 12 in dia. corner N.W.
 40.00 Set a post from white, a Beech 12 in dia. cor. tree
 Beech. 5 in dia. here N 6 E 30 lbs ash, &
 Poplar. 10 " " Sp 7 N. 22 " "
 80.00 Set a post for the cor of sec 22, 23, 26 & 27 from white,
 Sugar. 3 in dia. here S 29 E 17 lbs ash, &
 No. 21 " " N 62 E 25 " "
 Land 2nd rate; Timber Beech, 73 Ash, & Poplar,

✓ East On a Random line between sec 23 & 26. I 13. N R 177.
 40.00 Set a trip 1/2 sec post.
 79.70 Set out the N 1/2 line 67 miles South of the post cor of
 Sec 23 24 25 & 26 Land 2nd rate; Timber Beech,
 73 Oak, 73 Ash, & Poplar,

West On the true line between Sec 23 & 26. I 13. N R 177.
 39.85 Set the trip 1/2 sec post at the ar. ash. on the true line from
 white, Beech. 12 in dia. here N 48 E 22 lbs ash, &
 Sugar. 12 " " S 84 E 28 " "
 79.70 To the cor of sec 22, 23, 26 & 27.

North Return Jul 22 & 23. I 13. N R 177.
 40.00 Set a post from white,
 N Oak. 7 in dia. here S 83 N. 14 lbs ash, &
 Cottonwood 16 " " S 82 E 12 " "
 70.00 To a cottonwood with the above name in the line
 80.00 Set a post for the cor of sec 14 & 15, 23 & 23 from white,
 Hogwood 2 1/2 in dia. here N 87 N. 12 lbs ash, &
 Cottonwood 12 " " N 7 E 8 " "
 Land here. half 2nd rate; 2nd to Town,

East On a Random line between Sec 14 & 23. I 13. N R 177

40.00 Set a trip 1/2 sec post.
 80.00 Set out the N 1/2 line 57 1/2 miles South of the post
 cor of Sec 13, 14, 23 & 24 Sept. 21, 1817
 Land here and 2nd rate; Timber Beech, 73 Ash,
 Sugar, 73 Oak, Poplar, &c.

West On the true line between Sec 14 & 23. I 13. N R 177.
 40.00 Set a trip 1/2 sec post at the ar. ash. on the true line from
 white, Beech. 20 in dia. here N 29 N. 13 lbs ash,
 and a Poplar. 20 " " S 36 E 24 " "
 80.00 To the cor of sec 14 & 15, 22 & 23.

North Return Sec 14 & 23. I 13. N R 177.
 0.62 To a Red Oak, 20 in dia. in the line.
 40.00 Set a post from white,
 Beech. 15 in dia. here N 74 E 42 lbs ash, &
 No. 10 " " Sp 7 N. 13 " "
 44.60 To a Beech. 18 in dia. in the line.
 71.06 To a Beech. 24 in dia. in the line.
 80.00 Set a post for the cor of sec 10, 11, 14 & 15 from white,
 73 Ash. 20 in dia. here N 87 N. 18 lbs ash, &
 No. 16 " " S 53 N. 16 " "
 Land 1st rate; Timber. Beech, Sugar, Poplar,
 73 Ash, & Hick.

East On a Random line between Sec 11 & 14. I 13. N R 177
 40.00 Set a trip 1/2 sec post.
 80.13 Set out the N 1/2 line at the cor of sec 11, 12, 13 & 14
 Land here and 1st rate; Timber Beech, Poplar,
 73 Ash, Hick, & Walnut, 73 Spruce.

West On the true line between Sec 11 & 14. I 13. N R 177
 40.067 Set the trip 1/2 sec post at the ar. ash. on the true line

T. No 13. N. R. No 177 Dnd Mn. Ind.

From which, Hick 14 in diam. 125 ft. 12 lbs dist
and a Buck. 20 " " 155 ft. 24 " "
80.13 To the cor of sec 10, 11, 14 & 15.

North Return Sec 2 & 3 T. 13. N. R. 177.

40.00 Entered a Swamp.

12.50 To a Stick 12 in diam. in the river.

27.50 Left Swamp.

40.00 Set a new post from which
Buck. 15 in diam. 111 ft. 13 ft. dist. to
Buck. 7 " " 144 ft. 14 ft. " "

44.89 To a swamp. Oak. 10 lbs diam. in the river.

45.00 Entered a swamp.

80.00 A N Oak 48 in diam. 111 ft. 13 ft. dist. to
from which, N Hick 14 in diam. 130 ft. 14 lbs dist.
& a Spruce. " " 173 ft. 48 " "
Found Swampy thick timber Sycamore, Buck, Hick,
N Oak, & B Oak.

East On a line arm line between Sec 2 & 3 T. 13. N. R. 177.

40.00 Set a temporary post.

42.00 Entered a swamp.

79.75 Entered the N 13 line, 86 lbs North of the post cor
of sec 1, 2, 11 & 12. Found level and rich timber
Poplar, Buck, Oak, & Hackberry.

West On the line between Sec 2 & 3 T. 13. N. R. 177.

39.97 Set the temporary post at the cor dist on the river line
from which, Buck. 14 in diam. 126 ft. 20 ft. dist.
and a Poplar. 4 " " 146 ft. 26 " "

79.75 To the post cor of sec 2, 3, 10 & 11

North Return Sec 2 & 3 T. 13. N. R. 177

T. No 13. N. R. No 177 Dnd Mn. Ind.

2.50 To a Stick 12 in diam. in the river.

38.80 To a Buck. 15 in diam. 111 ft. 13 ft. dist. to the river.

40.00 Set a new post from which
Buck. 7 in diam. 134 ft. 35 ft. dist. to
Sugar. 12 " " 163 ft. 33 ft. " "

50.00 Entered a swamp.

52.12 To a Stick 12 in diam. in the river.

53.00 Left Swamp.

79.30 Entered the North Branch 119 lbs East of the
post cor of sec 34 & 35 T. 14. N. R. 177 and set a
" " " 253 from which
N Oak 30 in diam. 133 ft. 28 ft. dist. to
Hick 6 " " 177 ft. 14 " "
Found level and rich timber Buck, Hick, Oak,
N Oak, & Poplar. Sept. 32nd 1817.

North Return Sec 3 & 34 T. 13. N. R. 177

8.40 To a Buck. 24 in diam. in the river.

35.60 To " 24 " " " "

40.00 Set a new post from which
Buck. 9 in diam. 141 ft. 15 lbs dist. to
Sycamore 27 " " 126 ft. 18 " "

41.00 To a Brook 25 lbs diam. corner S. W.

49.00 To a Sugar. 18 in diam. in the river.

76.63 " 18 " " " "

80.00 Set a post for the cor of sec 27, 28, 33 & 34 from which
Buck. 15 in diam. 169 ft. 17 lbs dist. to
Dogwood 3 " " 180 ft. 11 " "
Found very broken and thin timber Buck, Oak,
Oak, N Oak, Sugar, Sycamore, & Dogwood.

East On a line arm line between Sec 27 & 34 T. 13. N. R. 177

40.00 Set a temporary post

40.00 Set a trap for suppost
 57.50 To a Brook corner N.W.
 59.50 " " Spring Br. corner N.W.
 71.00 To a Brook 20 links mid. corner N.W.
 81.79 Enter out the N.W. line 77 links North of the post corner
 26.27.34.35. Sand very poor, broken. Timber
 Birch, W.B. Oak, Irony Dogwood, Sassafras
 W. Green birch.

West On the line between Sur. 27. 134 T. 13. N.W. 177
 40.89 Set the trap for suppost at the ar. arch on the line
 from which, Sugar. 22 in diam. here. N.W. 177 the arch
 corner Birch 18 " " S.E. 22 " "
 81.79 To the cor. of sec. 27. 28. 33 & 34 Sept. 23. 1819.

North Between Sur. 27. 138. T. 13. N.W. 177
 1.22 To a Birch. 20 in diam. in the line.
 17.50 To a Brook 4 links mid. corner N.
 30.00 Entered bottom.
 34.36 To a Birch. 22 in diam. in the line.
 40.00 Set a trap suppost from which,
 Sugar. 12 in diam. here. S.W. 3 links arch, sec.
 Ho. 18 " " S.W. 12 " "
 42.40 To a Birch. 24 in diam. in the line.
 53.00 To a Brook 36 links mid. corner S.W.
 61.20 " " Birch. 22 in diam. in the line.
 62.00 To a Brook 16 links mid. corner with & crossing bottom
 78.00 At the Brook. corner S.W.
 80.00 Set a post for the cor. of sec. 21. 22. 27. 28 from which,
 Birch 5 in diam. here. N.W. 14 links arch, sec.
 Ho. 4 " " S.W. 6 " "
 Sand & 1/2 p. mile very broken and poor, last p. mile
 line in bottom Timber Birch, Sugar, ash, Poplar, & Oak.

East On a random line between Sur. 22 & 27 T. 13. N.W. 177
 39.00 To a Brook 18 links mid. corner S
 40.00 Set a trap for suppost
 52.00 To a spring Brook 5 links mid. corner N.
 64.00 " " Ho. 12 " " " " " "
 80.19 Enter out the N.W. line 59 links North of the post corner
 22.23.26.27. Sand 1/2 p. mile. Timber Birch, S
 Sugar, Last p. broken & thin. Row Grand points
 Timber Birch, Hickory Sugar, Oak & Ash.

West On the line between Sur. 22 & 27 T. 13. N.W. 177
 40.09 Set the trap for suppost at the ar. arch on the line
 from which, Sycamore 24 in diam. here. N.W. 24 links arch
 corner Ho. 27 " " S.E. 10 " "
 80.19 To the post corner sec. 21. 22. 27 & 28.

North Between Sur. 21 & 22 T. 13. N.W. 177
 8.81 To a W. Oak. 6 in diam. in the line.
 30.25 To a Snaking asp. 13 in diam. in the line.
 40.00 Set a trap suppost from which,
 Elm. 6 in diam. here. N.W. 10 links arch, sec.
 Maple. 6 " " S.W. 12 " "
 44.00 To a Snaking Asp. 12 in diam. in the line.
 75.10 To a W. Oak. 12 in diam. in the line.
 80.00 Set a post for the cor. of sec. 15. 16. 21 & 22 from which,
 Birch 12 in diam. here. N.W. 35 links arch, sec.
 Hickory 10 " " S.W. 7 " "
 Sand and ash. Timber Birch, Sugar, Ash,
 Poplar, S. Asp. Maple, Oak, W. Spruce & Hazel.

East On a random line between Sur. 15 & 22 T. 13. N.W. 177
 40.00 Set a trap for suppost attempt
 79.37 Entered the East Boundary or N.W. line 66 links North

T. N. 13. N. R. N. 1712nd Mo. Ind.

of the post on of ear 14.15.22+23.

Land level and rich Timber Sugar, Ash, Poplar, Walnut, & Cottonwood, a Quaking ash, W. Spruce.

West On the line between Sec 15 & 20, T. 13. N. R. 17. 1712
39.63 Set the timber post at the ar ash on the line from
which, Bech. 11 in dia' beam. A 6 W 1 1/2 lbs ash, & 10,
Lo. 12 1/2 " " " 2 1/2 " " "
To the corner of ear 15.16 & 21 & 22. Sept. 24. 1817.

North Between Sec 15 & 16, T. 13. N. R. 17.

3.40 To a Bech. 10 in dia' in the line.

35.00 " " " " " " " " " " " "

40.00 Set a post from which,

Hick 20 in dia' beam. S 81 E. 10 lbs ash, & 10,

Bech. 5 " " " " " " " " " " " "

Land level

113.55 To a B. Ash. 6 in dia' in the line.

73.23 " " " " " " " " " " " "

80.00 Set a post from which,

B. Ash. 6 in dia' beam. A 87 E. 14 lbs ash, & 10,

Lo. 5 " " " " " " " " " " " "

Land level and good for farming

" " " " " " " " " " " "

Oak, Ash, Poplar, Sugar, Bech. & C. Spr.

Oak, Ash, Bech. W. Spruce, Maple.

East Between Sec 10 & 15 T. 13. N. R. 17 On all com down line

40.00 Set a timber post

79.25 Enter at the N. R. line 13 miles South of the first corner of ear 10.11.14 & 15. Land level flat, level on the last 1/2 both inclined to W. North, Timber B. Ash, Bech. & Hick.

T. N. 13. N. R. N. 1712nd Mo. Ind.

West On the line between Sec 10 & 15, T. 13. N. R. 17.

39.62 Set the timber post at the ar ash on the line from
which, Hick 24 in dia' beam. S 52 E. 2 lbs ash, & 10,

B. Ash, 27 " " " " " " " " " " " "

79.25 To the corner of ear 9.10.15 & 16.

North Between Sec 9 & 10, T. 13. N. R. 17.

5.75 To a B. Ash. 10 in dia' in the line.

40.00 Set a post from which,

Maple. 8 in dia' beam. S 55 E. 18 lbs ash, & 10,

B. Ash. 6 " " " " " " " " " " " "

43.83 To a B. Ash. 10 in dia' in the line.

42.39 " " " " " " " " " " " "

80.00 Set a post for the corner of ear 3.4.9 & 10 from which,

Elm. 24 in dia' beam. A 36 E. 4 lbs ash, & 10,

Bech. 14 " " " " " " " " " " " "

Land level and flat, mt and very brushy, of various

Kinds Timber Bech, ash, B. Ash, B. Ash, A. B. Hick

Elm. Spruce, & Sycamore, & Oak.

East On all com down line between Sec 3 & 10 T. 13. N. R. 17.

40.00 Set a timber post

79.73 Enter at the N. R. line at the first corner of ear 2.3.10 & 11.

Land level and very mt & brushy Timber Oak, Ash,

Sugar, & Bech, Spruce, & W. Brushy with Spruce, &

Ash Timber

West On the line between Sec 3 & 10, T. 13. N. R. 17.

39.86 Set the timber post at the ar ash on the line from

which, Bech. 16 in dia' beam. A 59 E. 8 lbs ash, & 10,

Lo. 13 " " " " " " " " " " " "

79.33 To the corner of ear 3.4.9 & 10.

T. N. 13. N. R. N. 17. 2nd Mer. Ind.

Sugar. In air has N 67. W 10. links dist. La.
 Buck 18. " " " S 33. E. 20. " "
 80. 42 To the post cor. of Sec. 20. 21. 28. & 29.

North Between Sec. 20 & 21. T. 8. 13. N. R. 1. W.
 00 67 To a Sapafra 1. foot in diam. in the line
 26. 30 To a Spring. Course W.
 40. 00 To a post for the cor. of Sec. from which a
 Hickory 4 in diam. bears S 65. E. 10 links dist. La.
 a No. 8. " " " S 82. W. 16. " "
 68. 94 To a W. Oak 14 in diam. stands in the line
 80. 00 To a post for the cor. of Sec. 16. 17. 20. & 21. from which
 a Buck 5 in diam. bears N 27. W. 9 links dist. La.
 Lynn 14. " " " S 15. 4. W. 27. 4. " "
 Land level & 2nd rate. Timber. Buck. Ash. &c.

✓ East On a Random line between Sec. 16 & 21. T. 13. N. R. 1. W.
 40. 00 To a temp^o post for the cor. of 14 Sec.
 80. 50 Intersect the East Bound^o 71 links North of
 the post cor. of Sec. 15. 16. 21. & 22.
 Land level. Timber. Buck. Sugar. Poplar.
 B. Ash. & W. Oak. Temp^o 14. 18. 19.

West On the True line between Sec. 16 & 21. T. 13. N. R. 1. W.
 40. 25 To the post for the cor. of 14 Sec. at the over dist.
 on the true line from which a
 Buck 12 in diam. bears S 87. W. 16 links dist. La.
 No. 14. " " " S 77. E. 14. " "
 50. 50 To the post cor. of Sec. 16. 17. 20. & 21.

North Between Sec. 16 & 17. T. 8. 13. N. R. 8. 1. W.
 26. 76 To a Hickory 16 in diam. stands in the line
 32. 50 Entered a Swamp

T. N. 13. N. R. N. 17. 2nd Mer. Ind.

40. 00 To a temp^o post for the cor. of Sec. from which
 Buck. 6 in diam. bears N 86. E. 8 links dist. La.
 Buck 12. " " " S 67. E. 24. " "
 41. 00 Left Swamp
 51. 77 To a Buck 10 in diam. in the line.
 80. 00 To a post for the cor. of Sec. 8. 9. 16. 17 from which
 Sugar 14 in diam. bears N 87. W. 16 links dist. La.
 No. 13. " " " East 28. " "
 Land level of 2nd rate. Timber Buck. Sugar &
 Poplar, Hickory & Swamp Oak.

East On a Random line between Sec. 9 & 16. T. 13. N. R. 1. W.
 40. 00 To a temp^o post for the cor. of 14 Sec.
 80. 34 Intersect the N. 13 line 74 links North of the post cor.
 of Sec. 9. 10. 15 & 16. Land level and rich Timber
 Buck. Poplar, Rich. Red Elm, & B. Oak.

West On the True line between Sec. 9 & 16. T. 13. N. R. 1. W.
 40. 17 To the temp^o post for the cor. of 14 Sec. at the over dist.
 on the true line from which
 Buck 14 in diam. bears S 35. E. 20 links dist. La.
 No. 10. " " " S 88. W. 42. 4. " "
 80. 34 To the cor. of Sec. 8. 9. 16. & 17.

North Between Sec. 8 & 9. T. 13. N. R. 1. W.
 2. 00 To a Sugar 20 in diam. stands in the line
 38. 97 To a Buck 13. " " " " " "
 40. 00 To a post for the cor. of 14 Sec. from which a
 Buck 20 in diam. bears S 33. E. 8 links dist. La.
 No. 15. " " " S 17. E. 15. " "
 41. 50 To a Buck 15 in diam. stands in the line
 70. 00 Entered a Swamp
 80. 00 To the post for the cor. of Sec. 4. 5. 8. & 9 in a
 Swamp. from which a

T. N. 13 N. W. N. 177 2nd Mer. Ind.

Land level ends swampy ends rock. Timber Beech, Poplar, Elm, & B. Oak, Sept. 28 1819.

North Return Dec. 29 1830 T. 13. N. W. 177.
 16.67 To a Beech 12 in diam in the line.
 40.00 Set a 7/8 suppost from which,
 Beech 12 in diam here S 35 W 31 the dist. 1/2
 B. Oak 8 " " N 65 E 34 "
 49.17 To a Beech 11 in diam in the line.
 74.82 To a B. Hick 12 " " " "
 80.00 Set a post for the cor of sec. 36. 19 29 130 from which,
 B. Oak 3 in diam here S 67 W 9 the dist. 1/2
 W Oak 5 1/2 " " S 24 E 5 1/2 "
 Land level ends 2nd rate; Timber B. Oak, Hick,
 Sugar, & B Oak, Spruce Shrub

East On a Random line between Dec. 29 & 30 T. 13. N. W. 177
 40.00 Set a temporary suppost
 79.70 Intercept the N 13 line 120 links South of the post cor.
 of sec. 21. 21. 28 & 29. Land level ends 2nd rate
 Timber Beech, Sugar, Poplar, W B Oak, &c.

West On the true line between Dec. 20 & 29 T. 13. N. W. 177
 39.85 Set the temporary suppost at the ar. dist. in the true line from
 which, Hick 12 in diam here S 42 E 12 the dist.
 and also B Oak 8 " " N 19 E 26 1/2 "
 79.85 To the cor of sec. 19. 20. 29. 130 Sept. 27th 1819.

West Return Dec. 19 1830 T. 13. N. W. 177.
 10.34 To a Spruce 20 in diam in the line.
 40.00 Set a 7/8 suppost from which,
 Beech 7 in diam here N 73 W 14 1/2 the dist. 1/2
 Sugar 30 " " S 63 E 17 " "

Compd

T. N. 13 N. W. N. 177 2nd Mer. Ind.

69.15 Intercept the West Bond. 24 links north of the post cor.
 of sec. 24 & 25. T. 13 N. W. 177 and set a post for the
 cor of 19 & 30 from which,
 Hick 18 in diam here N 9 E 18 the dist. 1/2
 Beech 7 " " N 87 W 24 1/2 "
 Land level ends 2nd rate; Timber Sugar, Beech,
 Hick, Poplar, W Oak, B Oak, Sept. 28. 1819

North Return Dec. 19 & 20 T. 13. N. W. 177.
 12.75 To a Spruce 20 in diam in the line.
 40.00 Set a 7/8 suppost from which,
 Cherry 12 in diam here South 12 the dist. 1/2
 Beech 15 " " N 29 W 29 "
 68.80 To a Beech 20 in diam in the line.
 80.00 Set a post for the cor of sec. 17. 18. 19 & 20 from which,
 Spruce in diam here S 7 W 7 1/2 the dist. 1/2
 B. Oak 10 " " N 86 W 29 "
 Land level rich &c. Timber Beech, Cottonwood
 B. Oak, Sugar, &c.

East On a Random line between Dec. 17 & 20 T. 13. N. W. 177
 40.00 Set a temporary suppost
 79.81 Intercept the N 13 line 18 links South of the post cor.
 of sec. 16. 17. 20 & 21. Land level & 2nd rate; Timber
 Beech, Poplar, W Oak, & B. Oak.

West On the true line between Dec. 17 & 20 T. 13. N. W. 177
 39.90 Set the temporary suppost at the ar. dist. in the true line
 from which, Beech 15 in diam here S 18 1/2 E 6 1/2 the dist.
 and also Flag rock 3 " " N 39 W 27 " "
 79.81 To the cor of sec. 17. 18. 19 & 20

West Return Dec. 19 & 18 T. 13. N. W. 177.

T. N. 13. N. R. N. 17. D. M. Ind.

- 10.25 To a Beech 10 in diam stands in the line.
 40.00 Set a post from which
 Red Oak 14 in diam bears N 33 E 22 ft the dist.
 a Red Elm 3 " " S 35 E 18 " "
 48.73 To a White Oak 8 in diam in the line
 62.72 To a Birch 20 " " " "
 68.79 Intersect the West Boundary 34 ft South of
 the corner of sec 13 & 24. T. 13. N. R. 27 and set a
 post for the corner of sec 18 & 19 from which
 Beech 14 in diam bears N 54 E 37 ft the dist. to
 No. 15 " " N 67 W 20 " "
 Sand and gravel under 2nd rate; Timber Beech, Sugar
 ash, Poplar, Oak,

North Between Sec 17 & 18 T. 13. N. R. 17.

- 10.32 To a Beech 24 in diam in the line.
 40.00 Set a post from which
 Elm 10 in diam bears N 56 E 19 ft the dist. to
 W Beech 3 " " S 43 E 3 ft " "
 48.35 To a Maple 20 in diam in the line
 71.96 To a Beech 12 " " " "
 80.00 Set a post for the corner of sec 18 & 19 from which
 Birch 3 in diam bears N 8 E 23 ft the dist. to
 W Beech 4 " " N 64 E 19 " "
 Sand and gravel under Swampy Timber Walnut Oak
 Birch, Poplar,

East On a Random line between Sec 8 & 17 T. 13. N. R. 17.

- 40.00 Set a temporary post
 79.73 Intersect the East Boundary 50 ft South of the post
 corner of sec 8 & 17. Sand and gravel under Swampy
 Timber Beech, Poplar, Oak, Sugar, Birch,
 Hickory

T. N. 13. N. R. N. 17. D. M. Ind.

- West On the true line between Sec 8 & 17 T. 13. N. R. 17
 39.86 Set the temporary post at the corner on the true line
 from which a Red Elm 12 in diam bears S 26 E 18 ft the dist.
 on a Red Oak 4 " " N 25 W 14 ft " "
 49.73 To the corner of sec 18 & 19. Sept. 28. 1819.

West Between Sec 18 & 19 T. 13. N. R. 17.

- 6-84 To a Hickory 20 in diam in the line.
 34.25 To a Gray Ash 22 in diam in the line.
 40.00 Set a post from which
 Beech 5 in diam bears S 54 E 36 ft the dist. to
 No. 12 " " N 77 W 18 " "
 45.55 To a Swamp ash 6 in diam in the line.
 69.14 Intersect the West Boundary 79 ft South of the post
 corner of sec 18 & 19 T. 13. N. R. 17 and set a post for
 " " " " 7 & 18 from which
 Beech 24 in diam bears S 5 E 14 ft the dist. to
 No. 11 " " N 40 W 25 " "
 Sand and gravel under Swampy Timber Ash, Oak, Beech, Sugar, Poplar,
 Maple, &c.

North Between Sec 17 & 18 T. 13. N. R. 17.

- 16.73 To a Hickory 24 in diam in the line.
 31.63 To a Walnut 9 " " " "
 40.00 Set a post from which
 Beech 16 in diam bears S 40 E 20 ft the dist. to
 No. 13 " " S 19 E 16 " "
 46.75 To an Elm 20 in diam in the line.
 74.44 To a Beech 12 " " " "
 80.00 Set a post on the true line for the corner of sec 18 & 19
 from which an Elm 12 in diam bears N 57 W 31 ft the dist.
 on a Beech 3 " " S 51 E 11 ft " "
 Sand and gravel under Swampy Timber Beech, Poplar,

T. N. 13. N. R. N. 17. 2nd Mm. Ind.

- 10.25 To a Beech 10 in diam stands in the line.
 40.00 Set a post from which
 Red Oak 14 in diam bears N 33 E 22 ft the dist.
 Red Elm 3 " " S 55 E 18 " "
 48.73 To a Maple 8 in diam in the line
 62.72 To a Beech 20 " " " "
 68.79 Intersect the West Borne 34 ft South of
 the cor of sec 13 & 24. T. 13. N. R. 17 and set a
 post for the cor of sec 18 & 19 from which
 Beech 14 in diam bears N 54 E 37 ft the dist.
 No. 15 " " N 67 W 20 " "
 Sand level under 2nd rate; Timber Beech, Sugar
 ash, Poplar, Oak.

North Return Sec 15 & 18 T. 13. N. R. 17.

- 10.32 To a Beech 24 in diam in the line.
 40.00 Set a post from which
 Elm 10 in diam bears N 56 E 19 ft the dist.; or
 W Beech 3 " " S 43 E 3 ft " "
 48.35 To a Maple 20 in diam in the line
 71.96 To a Beech 12 " " " "
 84.00 Set a post for the cor of sec 7, 8, 17 & 18 from which
 Beech 3 in diam bears N 8 E 23 ft the dist.; or
 W Beech 4 " " N 64 E 19 " "
 Sand level under Swampy Timber Walnut Oak
 Oak, Poplar.

East On a Random line between Sec 8 & 17 T. 13. N. R. 17

- 40.00 Set a temporary post
 79.73 Intersect the East Borne 30 ft South of the post cor
 of sec 8, 9, 16 & 17. Sand level. Some Swampy rich
 Timber Beech, Poplar, Oak, Sugar, Birch
 Hickory

T. N. 13. N. R. N. 17. 2nd Mm. Ind.

- West On the line between Sec 8 & 17 T. 13. N. R. 17
 39.86 Set the temporary post at the air arch on the line
 from which Red Elm 12 in diam bears S 26 E 11 ft the dist.
 on a Red Oak 4 " " N 25 W 14 " "
 49.73 To the cor of sec 7, 8, 17 & 18. Sept. 28. 1819

West Return Sec 18 & 17 T. 13. N. R. 17.

- 6-84 To a Hickory 20 in diam in the line.
 34.25 To a Gray Ash 22 in diam in the line.
 40.00 Set a post from which
 Beech 5 in diam bears S 54 E 36 ft the dist.; or
 No. 12 " " N 77 W 18 " "
 45.55 To a Swamp ash 6 in diam in the line.
 69.14 Intersect the West Borne 79 ft South of the post
 cor of sec 13 & 24 T. 13. N. R. 17 and set a post for
 " " " 7 & 18 from which
 Beech 24 in diam bears S 5 E 14 ft the dist.; or
 No. 11 " " N 40 W 25 " "
 Sand level. Timber Ash, Oak, Beech, Sugar, Poplar,
 Maple, etc.

North Return Sec 7 & 18 T. 13. N. R. 17.

- 16.73 To a Hickory 24 in diam in the line.
 31.63 To a Walnut 9 " " " "
 40.00 Set a post from which
 Beech 16 in diam bears S 40 E 10 ft the dist.; or
 No. 13 " " S 19 W 16 " "
 46.75 To an Elm 20 in diam in the line.
 74.44 To a Beech 12 " " " "
 80.00 Set a post on the line for the cor of sec 4, 5, 8 & 9
 from which Elm 12 in diam bears N 27 W 31 ft the dist.
 on a Beech 3 " " S 51 E 11 ft 10 " "
 Sand level under 2nd rate; Timber Beech, Poplar,

L.N.^o 13. N.R. N^o 17 D^{no} Mm. Ind.

Bark, W Oak, and Hick.

East On a Kan am low between Sat 5 & 8. 913 11.12.17
40.00 Set a trap for 1/2 cuprost.

49.50 Entered the N & S line Ck. North of the post co. of
Sec. 45, 8 & 9. Lands 1/2 pr 2nd rate, 2nd pr
Ornamental pick: 1st Timber Beech, Cedar, Hickory
& Poplar, &c.

West On the true line between Sec. 5 & 8 T. 13. N R. 1 W.
39.75 Set the temp. by exposit at the ar dist on the true lin
from which a thick 8 in air beam B3W 20 the dist
made as Lagan, 46 " " H.C. 22 " "
79.50 To the end of sec. 5. 6. / 78.

West Return Sub 607. J B. M. R. 17. Sept 27. 1819

301 To a Bush 20 in diam in the tree.

40.00 Set a post from which,
Bench 31 in air has N.E. 3rd dist; &
Do. " " " S.W. 1st "

5789 To a Bush 12 in. diam. in the tree

69.25. Cut out the West Boundary 104 1/2 miles dist
from the cor of sec 1433 T.13 N. R. 2 N and set a post
for " " " " 61 1/2 from white,
Bent 1.3 in each leg N 76 W. 1/2 the mile or so.

Dec. 14 1866 E. 26 . .
 Sand beds under 2nd rate; Smiths Brook, P. of
 W. Oak, & Hicks Sept. 28. 1817

North Return No. 546. J. B. M. 17

1.22 To g Red Oak 24, in decr in the time

40,00 Set a 72 Superp from which,
Bent 12 in dir from N 87 E. 31 W. ash; to

1 N^o 13 RR N^o 17 Dr^o Mr. Ind^o

Book 10 in dec teens \$317.79 Lks due; 2
46.50 To a Nick 30 in dec in the m.

6174 To a Honey Locust 24 in diam in the tree.

78.297 Intersub. to N. B. road 1133 km East of the post
cor. of sec. 31 132 J. 14 N. R. 1 W. could set a post for

" " " 5th. Gum white,
Buck 14 in new box N34 E. 26 p the dust, 10,
Edm. 20 " " Sp 2 p 61 "

Ground level on the river; Embankment, Poplar,
W. Oak, R. Oak, & Hick.

Invoiced by
John Milroy Ld.

I certify that the foregoing Transcript of the field
notes of Township No. 13 RR. 1 W. 2nd E. Mon.
in Indiana has been compared with the Origin-
al notes in this Office & found to be correct.
Surveyor General's Office,
Cincinnati, Oct. 27. 1841.

camp?